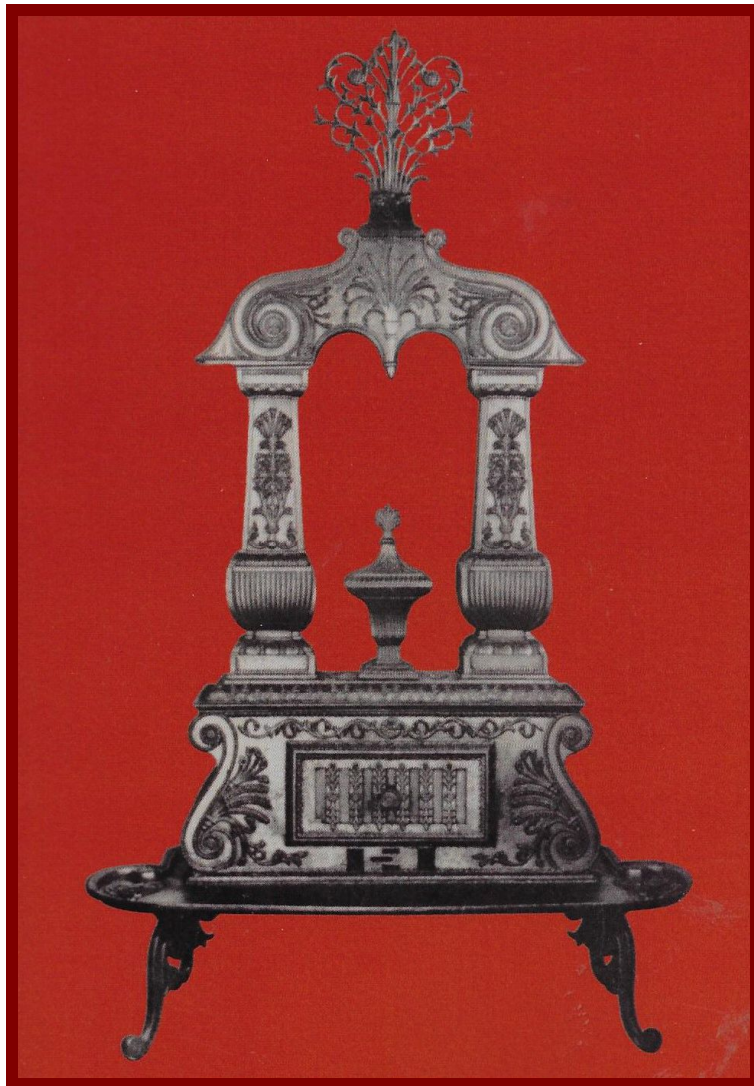
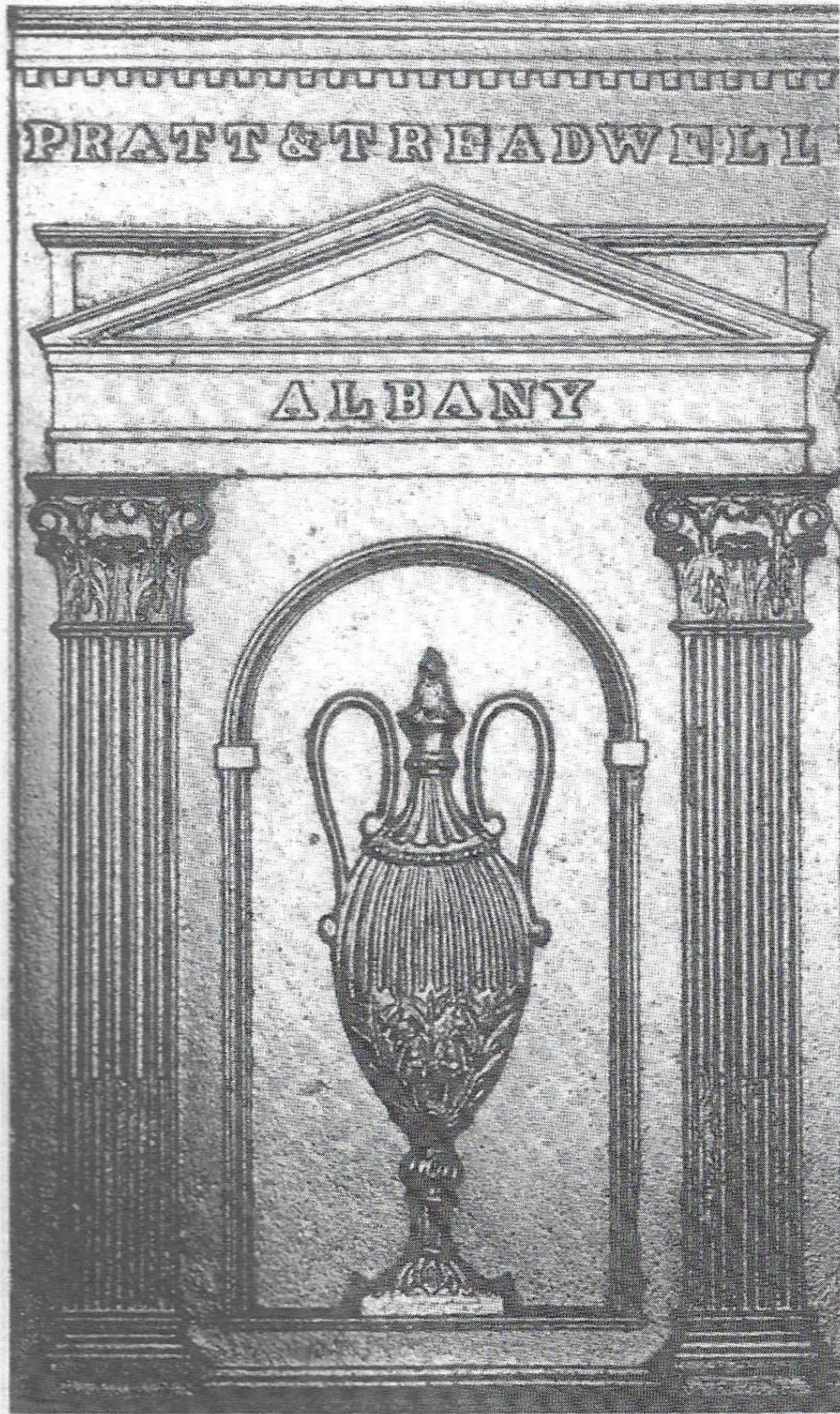


Heating Stoves 1730-1930

American Stoves From Albany



**A small selection of the 164 illustrations in *CAST WITH STYLE*
Nineteenth Century Cast-Iron Stoves from the Albany Area
Tammis Kane Groft, Albany Institute of History & Art, 2008**



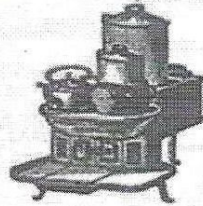
1. Side detail of a two-column parlor stove made by PRATT & TREADWELL, ALBANY (see Fig. 67).
Collection of the Albany Institute.

New Stove and Grate Factory.

Franklin Manning,

Has taken the Brick Stores on the corner of Union Wharf and Fore Street, next west of the old stand of Wyer & Barnd, where he will be constantly supplied with the newest and most approved patterns of Stoves and Grates. Among his variety of Cooking Stoves, are

RATHBONE'S CELEBRATED Patent Union Cooking Stoves,



An article recommended as combining more advantages with greater neatness of appearance; and as being more economical, both with regard to labor and fuel than any other stove which has been introduced—the various processes of boiling, with three boilers, roasting and baking are effectually performed at the same time; and the oven is particularly recommended for the perfect equality of heat maintained in every part, by its improved and peculiar construction.

CERTIFICATES:

We the subscribers, citizens of Albany, have used, during the past winter, Rathbone's Patent Union Cooking Stoves, and most cheerfully recommend them to our friends and the public as excellent and superior Cooking Stoves. We do not hesitate to say that for convenience, capacity, and economy, we believe them preferable to any cooking stove with which we are acquainted.

- | | |
|---------------------|----------------|
| P. BULLIONS, | S. HAWES, |
| I. CHAPIN, | J. WORCESTER, |
| D. SPARKAWAY, | D. BANFILL, |
| J. I. RATHBONE, | G. W. PECKHAM, |
| H. DIBBLEE, | CALVIN PEPPER, |
| Albany, March 1856. | I. C. BALDWIN, |

This is to certify, that I put up on trial in my house and used the *Rathbone's Patent Union Cooking Stove* for about four weeks, which I was compelled to return, as it would not answer my purpose, and put in its place, one of *Rathbone's Patent Union Cooking Stoves*, which I have now used about six weeks, and I can safely say, it is the best stove I have ever used or seen, and operates to my entire satisfaction.

Waterbury, Albany Co. Jan. 1856. S. MILLER.

This may certify, that I have in use one of *J. Rathbone's Patent Union Cook Stoves*, and am highly pleased with its operation, and deem it one of the best constructed cook stoves in use.

A. KINSMAN, Cooperstown,	A. A. FITCH, Hartwick,
NELSON DEMING,	C. BOWMAN, Middlefield,
W. L. NEWMAN, Otsego,	J. GARDENIER, Schoharck,

March, 1856.

The subscribers have had in use, for some time past, *Mr. Joel Rathbone's Patent Union Cooking Stoves*, and hesitate not to say, they are decidedly superior to any cooking stove we have ever before seen or used. The construction of the stove brings three boilers almost directly over the fire at once, and the improvement of the air flow between the oven and fire pass, causes the oven to heat very equally and perfectly; and the whole stove is, in our opinion, as near perfect as it can be made.

- | | |
|-----------------------|----------------------------|
| C. TODD, Bitterswell, | J. H. BISELL, Bitterswell, |
| O. SEELY, do, | GEO. SIMMONS, do, |
| M. WING, do, | JOHN LINK, Schoharck, |
| S. STAR, do, | WM. CRAIG, Carlisle, |
| S. NEARING, do, | IVL. LOUCKS, Schoharck, |

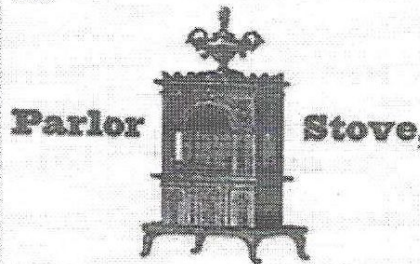
I have used in my family for some time past, *Rathbone's Patent Union Cooking Stove*, and am highly pleased with its operation, and do most cheerfully recommend them to the public. For economy, convenience and capacity in the different processes of cooking, I have never found a stove equal to it.

- | | |
|-----------------------|-----------------------------|
| Rev. D. PLATT, Homer, | M. SALSBURY, Cortlandville, |
| L. M. SCHERMERHORN, " | F. F. BRAINARD, " |
| H. WHITE, " | LEVI TAGGART, " |
| D. GLOVER, " | D. H. BOUTELL, Tully, |
| T. D. CHOLLAR, " | SALEM BAKER, " |
| ORIN HAYDEN, " | Wm. M. G. FARRELL, Tully, |
| EDSON SIGNOR, " | A. H. BRADGEN, Ferrisburgh, |
| R. NESBITT, " | HORACE H. JENKINS, Trossen, |
| J. S. FOULDER, " | WM. BRABCOCK, Gettys, |
| N. H. TANNER, " | |

There are four sizes of the *Union Cooking Stoves*—H, C, D, E.

He has also the 'Improved *Rathbone's Cook Stoves*,' with Cast Iron Ovens, and a beautiful article of the *Freemason*, and the *Three Boiler Cook Stoves*, get up in a style superior to any thing ever before offered in this market.

WIMPSON'S IMPROVED KITCHEN RANGES, and PIERPONT'S DORIC FIRE PLACES, together with a handsome assortment of Iron Fronted Mantel Grates, both plain and ornamented—and ground smooth and polished, with a variety of low priced chamber Grates, and Common Cylinder Coal Stoves—Ship, Cabin and Boat Stoves.



A rich and beautiful Article, suitable for Chambers, Dining Rooms, &c. finished with two ornate, and illuminated in front with mica windows.

KITCHEN FRANKLINS, with Cranes for suspending ranges over the fire—so used with pipes or in the common fire place. 2 Sizes.

FIRE FRAMES—a large and splendid assortment.

FIRE-PLATE STOVES, with and without Ovens—

FRANKLIN FIRE PLACES, with and without doors,—A good variety, and mostly new patterns.

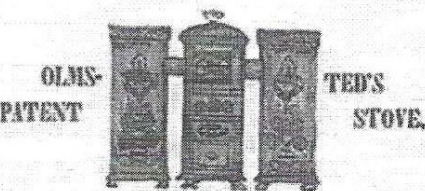
The Subscriber having made an improvement on his Furnace Oven will enable him to put up Hot Air Furnaces for houses on a plan superior to that of any other kind—so constructed as to perform the Cooking of a family, without in the least diminishing the heat of the air-chamber, or conducting any of the effects of cooking into the room.—Made either permanent or portable.

Portland, August, 1836.



OLNEY'S PATENT COAL BURNERS.—An article universally considered as among the best Office and Store Stoves—simple in construction—durable and economical in price and the consumption of fuel. 2 Sizes. Also—

PREMIER DORIC GRATE AND COAL COOKING STOVES.



For burning Anthracite Coal—a new and beautiful article, adapted to the various purposes for which coal stoves are generally used.

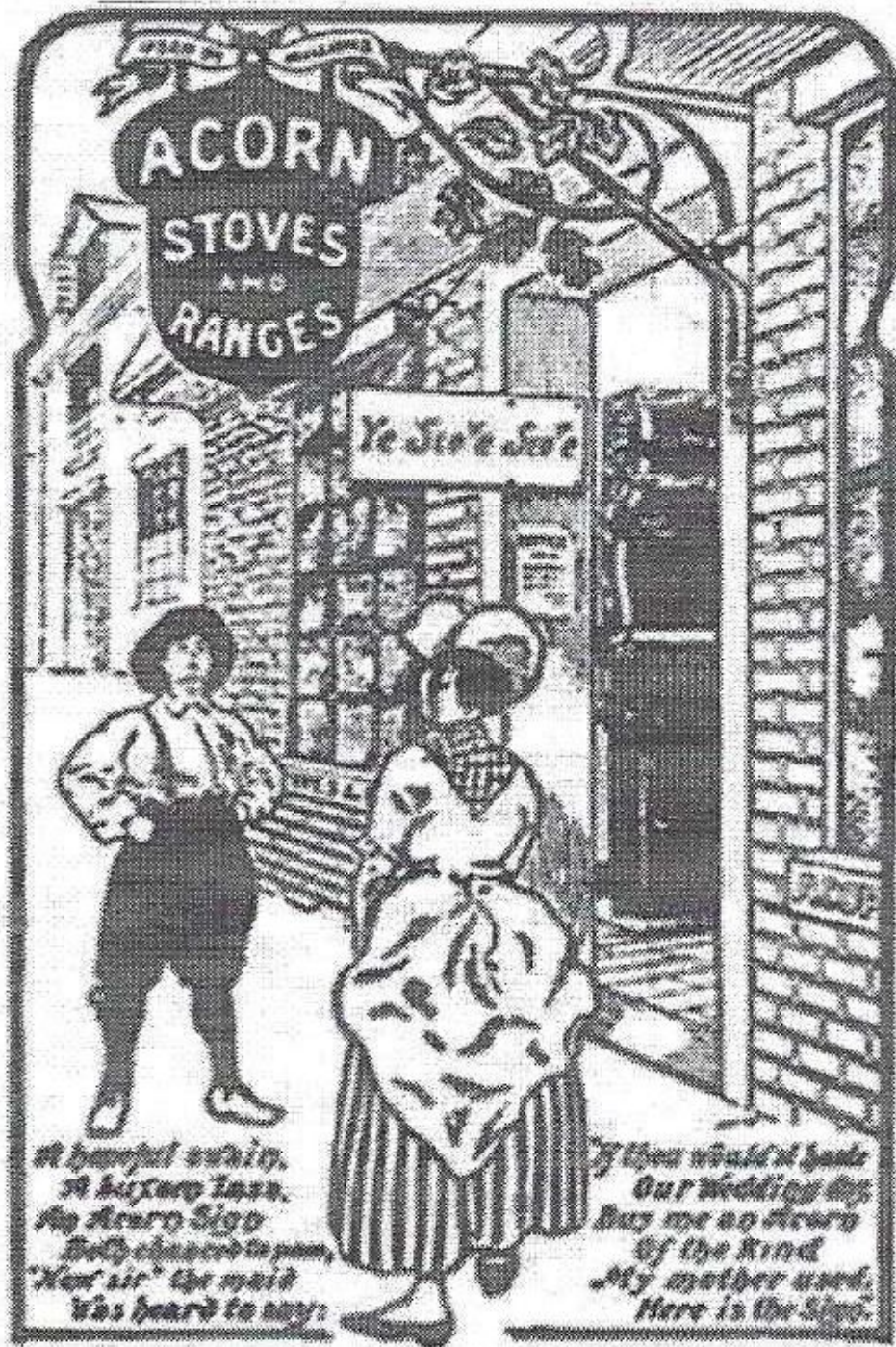
He also manufactures every description of Copper, Tin and Sheet-Iron Work, usually found in such establishments.—Also an excellent Cast-Iron Pump, Carbon Kettle, Oven, &c. &c.

Iron Castings of all patterns, furnished to order.

F. MANNING.

Broadside distributed by Franklin Manning of Portland, Maine, in 1836, featuring Rathbone stoves

made in Albany. Collection of John I Mesick, Schoharck, N. Y.



12. Example of promotional advertising material used by the Rathbone, Sard and Company in a trade catalogue published in 1902. Collection of Mr. (C. L. Mendenhall.

SCIENTIFIC AMERICAN

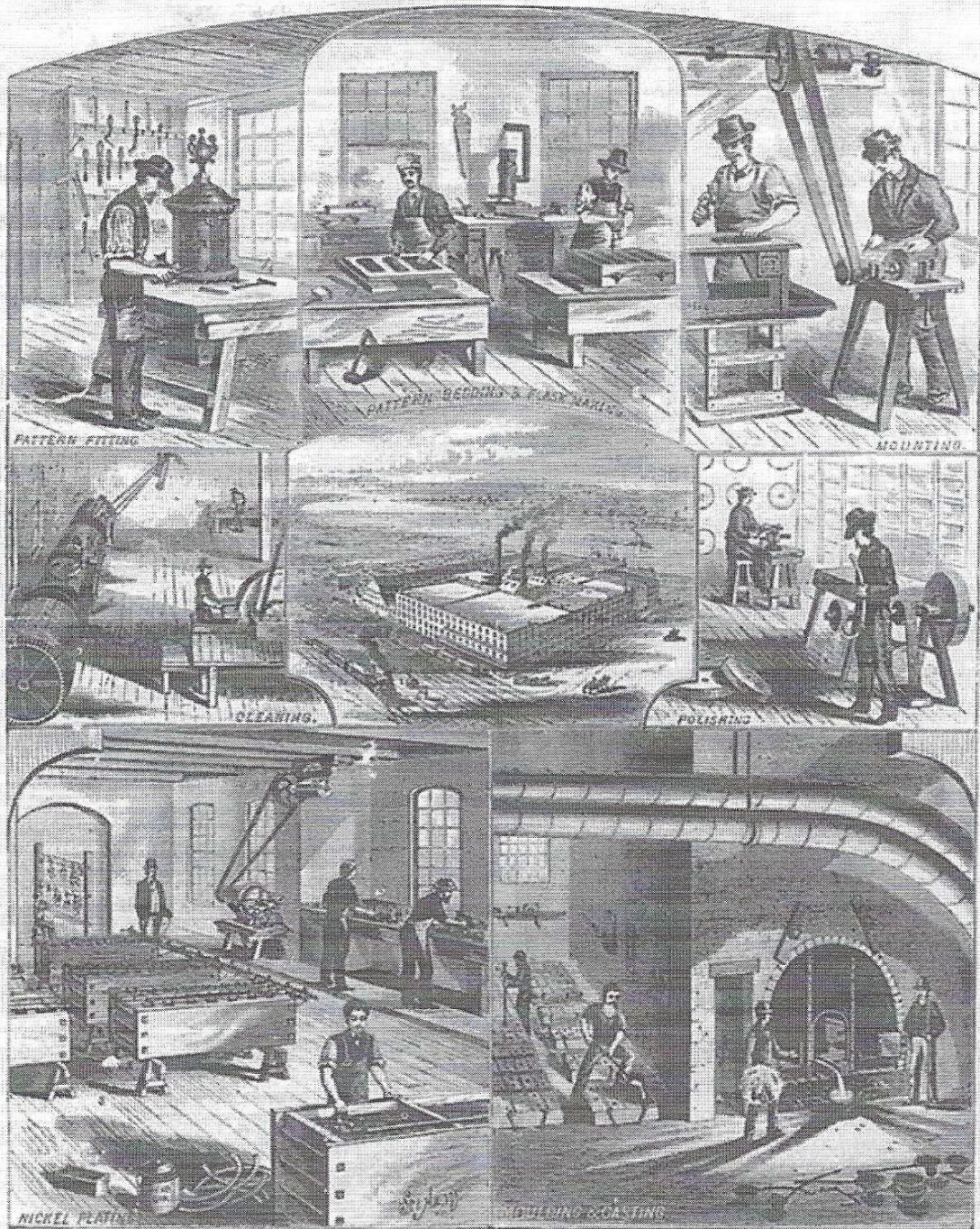
[Entered at the Post Office of New York, N. Y., as Second Class Matter.]

A WEEKLY JOURNAL OF PRACTICAL INFORMATION, ART, SCIENCE, MECHANICS, CHEMISTRY AND MANUFACTURES.

Vol. XLII. - No. 41.
[NEW SERIES.]

NEW YORK, MAY 29, 1880.

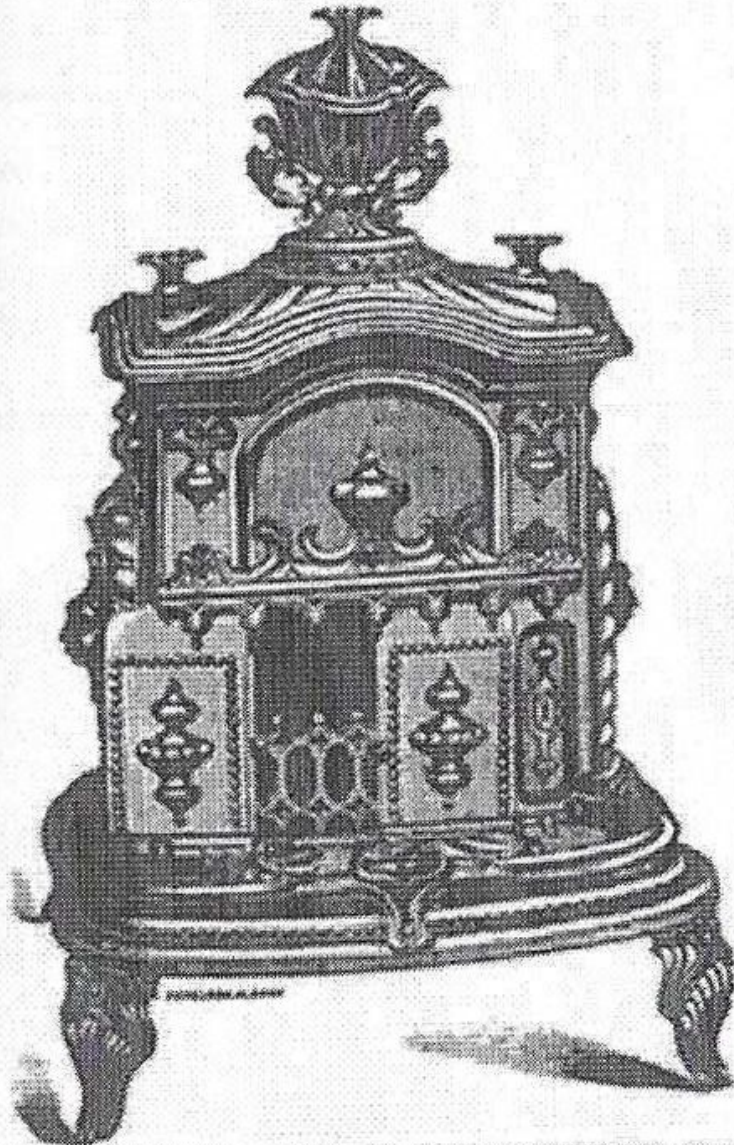
[\$3.20 per Annum.
[In Advance.]



STOVE MANUFACTURE—WORKS OF FULLER WARREN & CO. TROY, N. Y.—[See page 310.]

13. Collection of the New York State Museum, Albany, N.Y.

S. W. GIBBS,
DESIGNER
AND MANUFACTURER OF

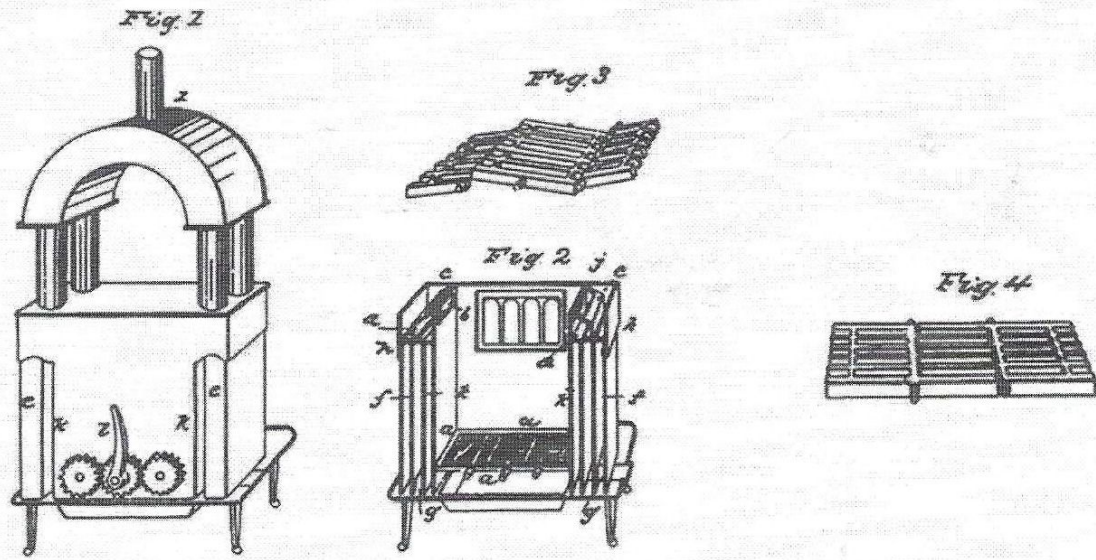


STOVE PATTERNS,

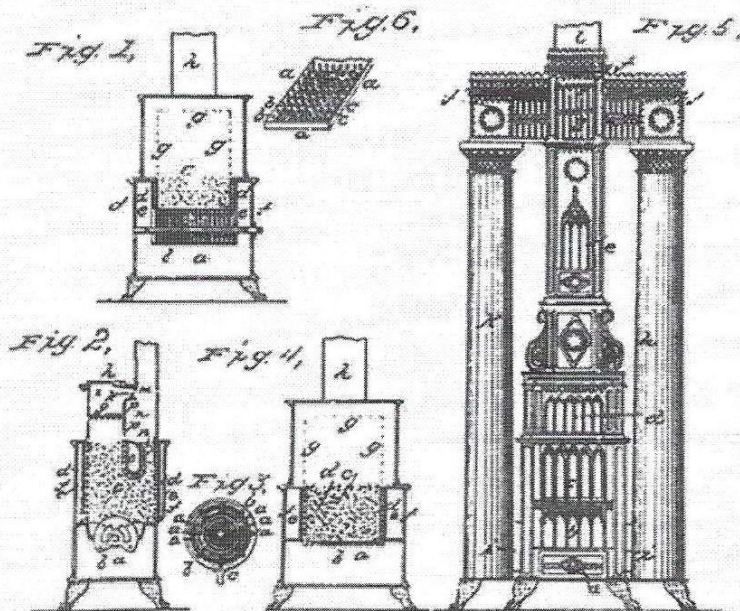
No. 9 LIBERTY STREET, ALBANY, N. Y.

AND CARVING OF EVERY DESCRIPTION DONE TO ORDER.

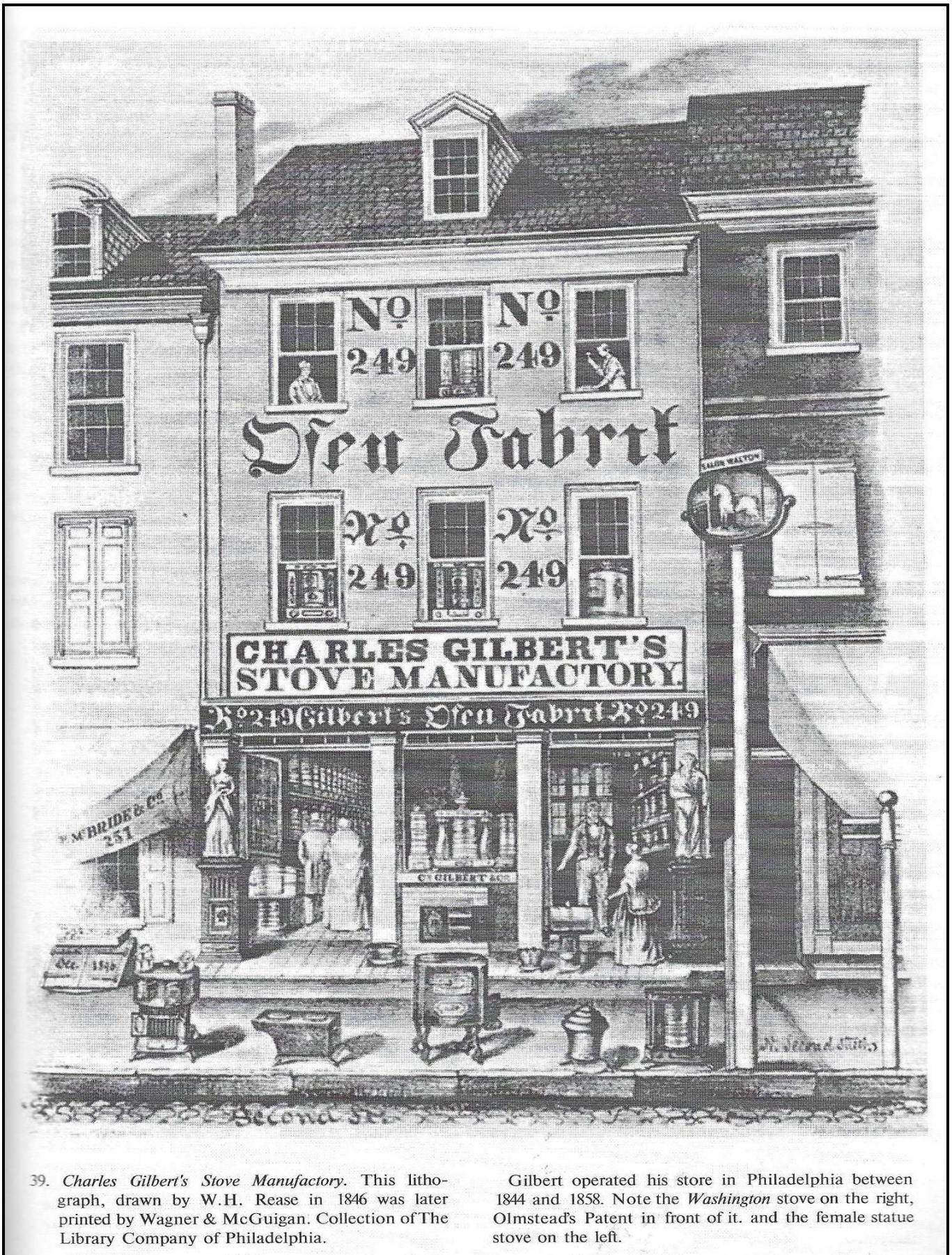
16. Advertisement for S.W. Gibbs from 1860 *Albany City Directory*.



33. *Store and Grate for Burning Coal.* Patented by Eli C. Robinson of Troy on June 30, 1838. Invention Pat. No. 813. Courtesy of the New York State Library in Albany.



34. *Magazine Store.* Patented by E. Nott of Schenectady on July 26, 1839. Invention Pat. No. 1,260. Courtesy of the New York State Library in Albany.



39. *Charles Gilbert's Stove Manufactory.* This lithograph, drawn by W.H. Rease in 1846 was later printed by Wagner & McGuigan. Collection of The Library Company of Philadelphia.

Gilbert operated his store in Philadelphia between 1844 and 1858. Note the *Washington* stove on the right, *Olmstead's Patent* in front of it, and the *female statue* stove on the left.

70. Four-column Parlor Stove

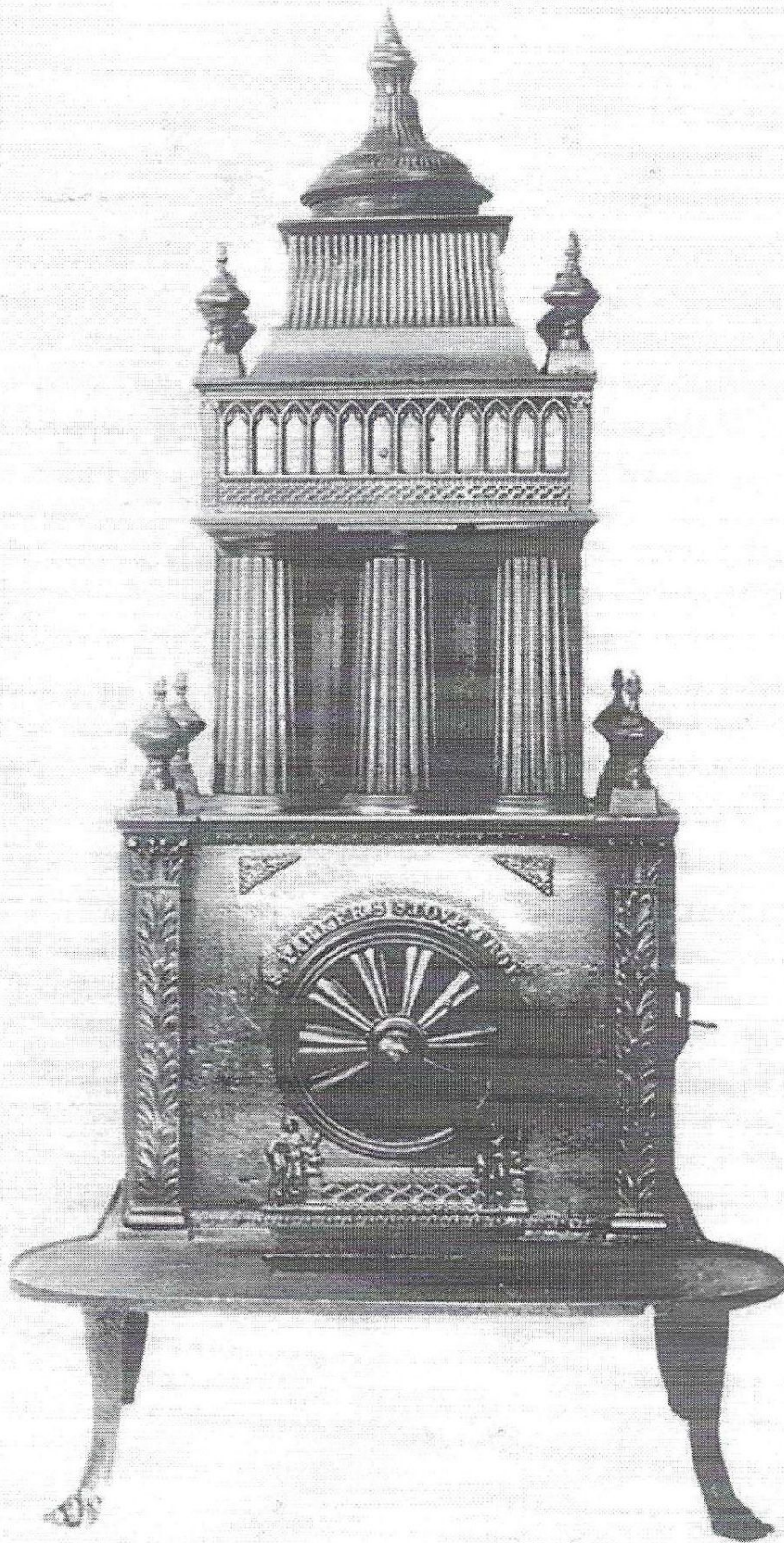
S. PARKER'S STOVE. TROY.

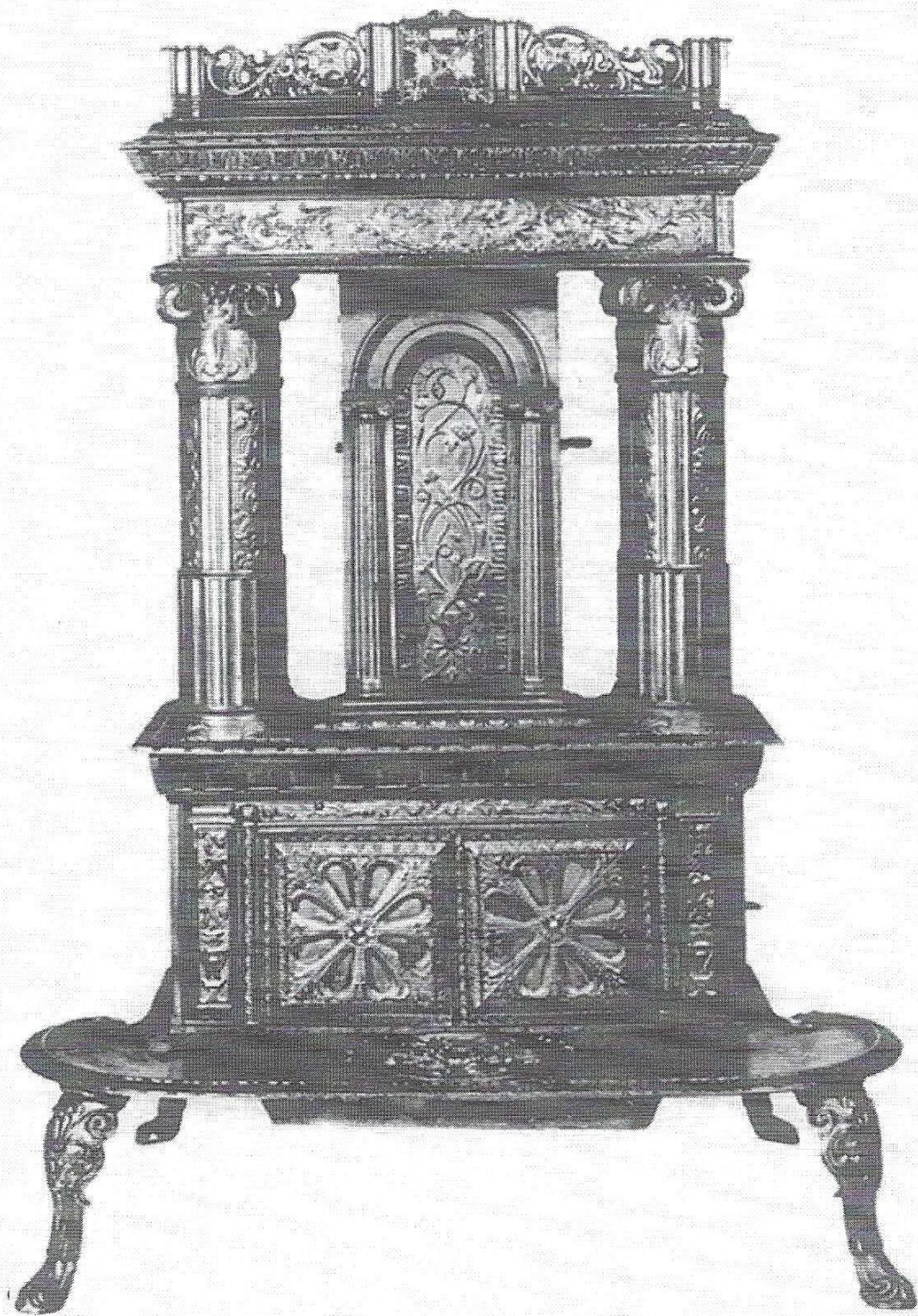
c. 1830-1843

52 ½" x 25" x 20"

Collection of the Albany Institute

This unusual stove has an overall Greek Revival design with three fluted columns, and one flat, rectangular flue. The circular draft-plate control is flanked by two figures. Parker's early stove designs, highly regarded for their artistic design, were cast at the Atison Iron Works in New Jersey (see p. 14). In 1835 Sylvester Parker of Troy was awarded a diploma at the Mechanics Institute Fair for 1 *Parlor* and 1 *Cooking stove...beautiful and convenient articles.*

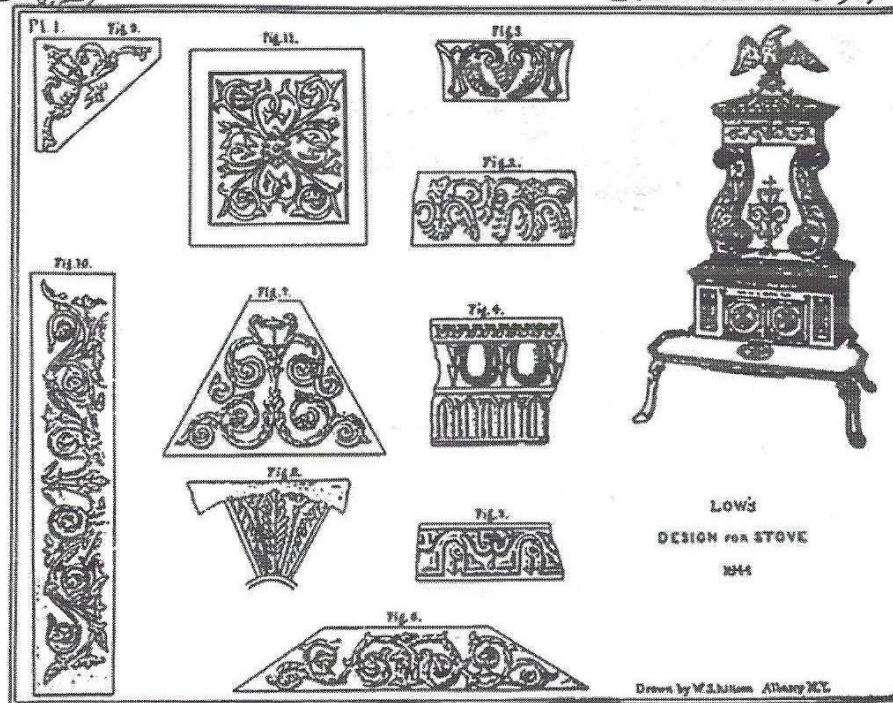




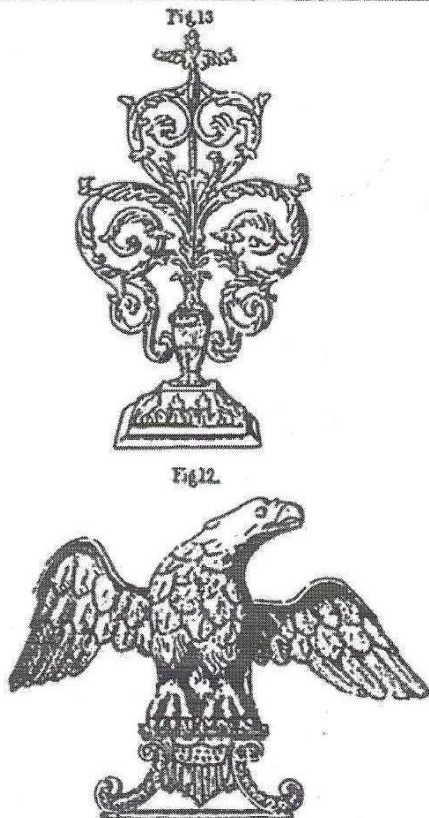
72. Four-column Parlor Stove
JOHNSON GEER & COX/TROY. N.Y. NO. 4
c. 1841-1845
49" x 34½" x 22"
Collection of the New York State Museum, Albany,
N.Y.

Compare this stove with that of Fig. 71. A graceful arch decorates the rectangular flue, two sliding ornamental wheels reveal the fire, and there is a circular draft control above the recessed ash pit on the hearth plate.

*Low & Leake of N.Y., Addison-Low Design for Stove
 No. 27 Patented Feb. 12th 1845.*



Pl. 2.



Drawn by W. S. Ellison Albany N.Y.

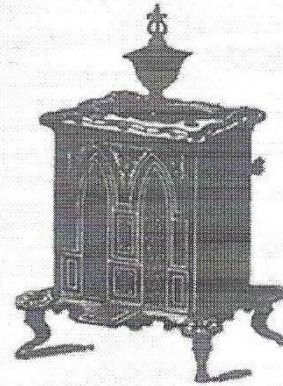
81. *Design for Stove.* Patented by Addison Low of Albany on February 12, 1845. Design Pat. No. 27. Collection of the U.S. Patent Office. Addison Low assigned his design to manufacturers Francis S. Low and John S. Leake. The illustration was drawn by William Ellison who is listed in the directory as an engineer, and responsible for numerous drawings submitted by area patentees. Also note that Ellison's drawing is dated 1844, whereas the patent was not issued until 1845.

94. Gothic Air-Tight Parlor Stove illustrated in *The Cook's Guide and Housewife's Directory* published in 1846 by Johnson, Geer and Cox, Troy, stove manufacturers. Collection of John I Mesick, Schodack, New York.

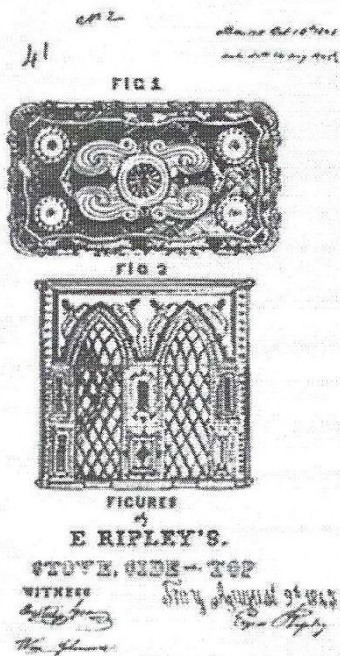
93. **Parlor Stove**
GOTHIC AIRTIGHT
JOHNSON GEER & COX. TROY N. YJ GEER & BOSWORTH/TROYN Y
PATENTED 1845
 31" x 29" x 19½"
 Collection of John I Mesick, Schodack, N. Y.

Elias Johnson, Gilbert Geer, and David B. Cox operated a foundry on Mechanic Street, Troy, from 1841 to 1845. In 1846 Gilbert Geer, a founder, entered into a new partnership with the merchant, Nathaniel Bosworth. Since both company names appear on this stove, Geer presumably bought the rights to this pattern and cast a new draft plate with his new company's name on it. Fig. 92 illustrates the stove when it was sold by the former company.

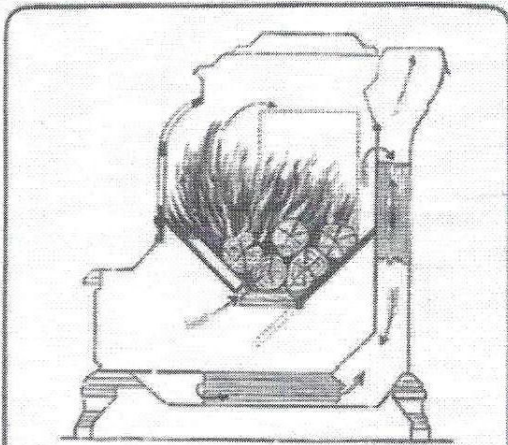
**PATENT AIR-TIGHT
 PARLOR STOVE,
 No. 3,
 For Wood.
 PATENTED 1845.**



The above Cut represents a Gothic Air-Tight Parlor Stove, about twenty inches in length, which was sold the last season, but which has been much improved this Spring, by the addition of a most elegant Bottom and Urn, rendering it a very desirable pattern.



94. **Ornamental Parlor Stove.** Patented by Ezra Ripley of Troy on August 14, 1845. Design Pat. No. 41. Collection of the U.S. Patent Office. Ezra Ripley assigned his design to manufacturers Johnson, Geer and Cox of Troy.



The Central Draft Principle.

The above cut represents the operation of the Central Draft as applied to the Denmark Franklin (page 64). It is similarly applied to the Denmark and Derby Patterns (pages 70 and 71).

It will be noticed that the Front Fire-Place is inclined forward into the extended front of the stove. This gives a Fire-Box of increased capacity, and places the draft opening about the center of the Fire-Box Bottom, and produces

THE PECULIAR AND BEAUTIFUL COMBUSTION claimed for this Stove, as the flame from the burning fuel is thrown directly against the Glass Windows, giving

THE FINEST ILLUMINATION EVER OBTAINED in a wood-burning stove, while the Glass are always bright and clean; any soot or smoke deposited upon them being immediately burned off by the action of the flame. When only a moderate fire is wanted, the fuel may be piled against the back fire-plate, and by closing the front draft, the fire may be kept

UNDER PERFECT CONTROL.

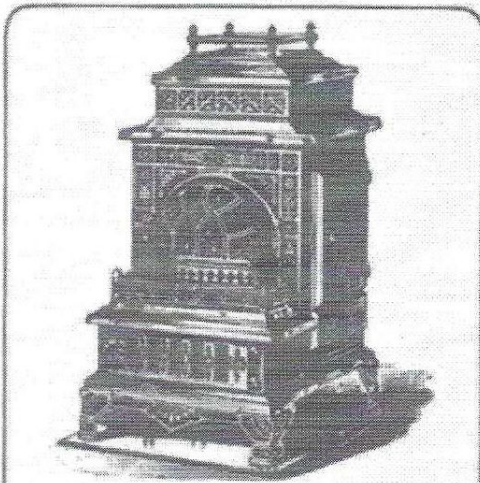
When, on the other hand, a quick, bright fire is desired, draw the fuel forward over the Central Draft and open the inclined front fire-plate, and the perfect combustion and brilliant illumination (as shown in the diagram) are instantly obtained. This principle is fully secured to us by letters patent, and

IT CAN BE FOUND ONLY IN OUR STOVES.

Every dealer can readily appreciate the importance of a specialty containing all of the valuable features above mentioned, and upon which he can have

ABSOLUTELY NO COMPETITION.

113. Illustrations in the Ransom Stove catalogue published in 1887. Collection of C.L. Mendenhall, Hoosick, N. Y.



The Denmark Franklin.

FOR WOOD.
BEST MODEL.

No. 21. 44 INCHES HIGH BY 22 INCHES WIDE. \$12.00

No. 22. 44 INCHES HIGH BY 22 INCHES WIDE. \$12.00

No. 23. 44 INCHES HIGH BY 22 INCHES WIDE. \$12.00

The No. 22 and 23 will take 17 1/2 inch wood.

The No. 24 and 25 will take 18 inch wood.

An elaborate, safety Regulation Wood Parlor Stove, mounted in the best manner, with elegant Nickel Trimmings, large Glass Door, extra large Ash-Pan, and

THE CENTRAL DRAFT FIRE-BOX.

We would call particular attention to the Marble Face that we show in the enclosed cut on page 64, which is an important feature and opens a new way.

The straight bars show the ordinary position during combustion. By a slight movement of the bars, it may be raised to the extent shown by the upper dotted lines, completely stopping all admission of air to the Fire Chamber. It may also be dropped when it is necessary to clean the fire.



114. Parlor Stove

DENMARK WOOD

RANSOM STOVE WORKS/NO. 22/ALBANY

N.Y. CHICAGO ILL.

PATENTED 1882/APRIL 17, 1877/JULY 8, 1878'

OTHER PATENTS PENDING, DESIGN

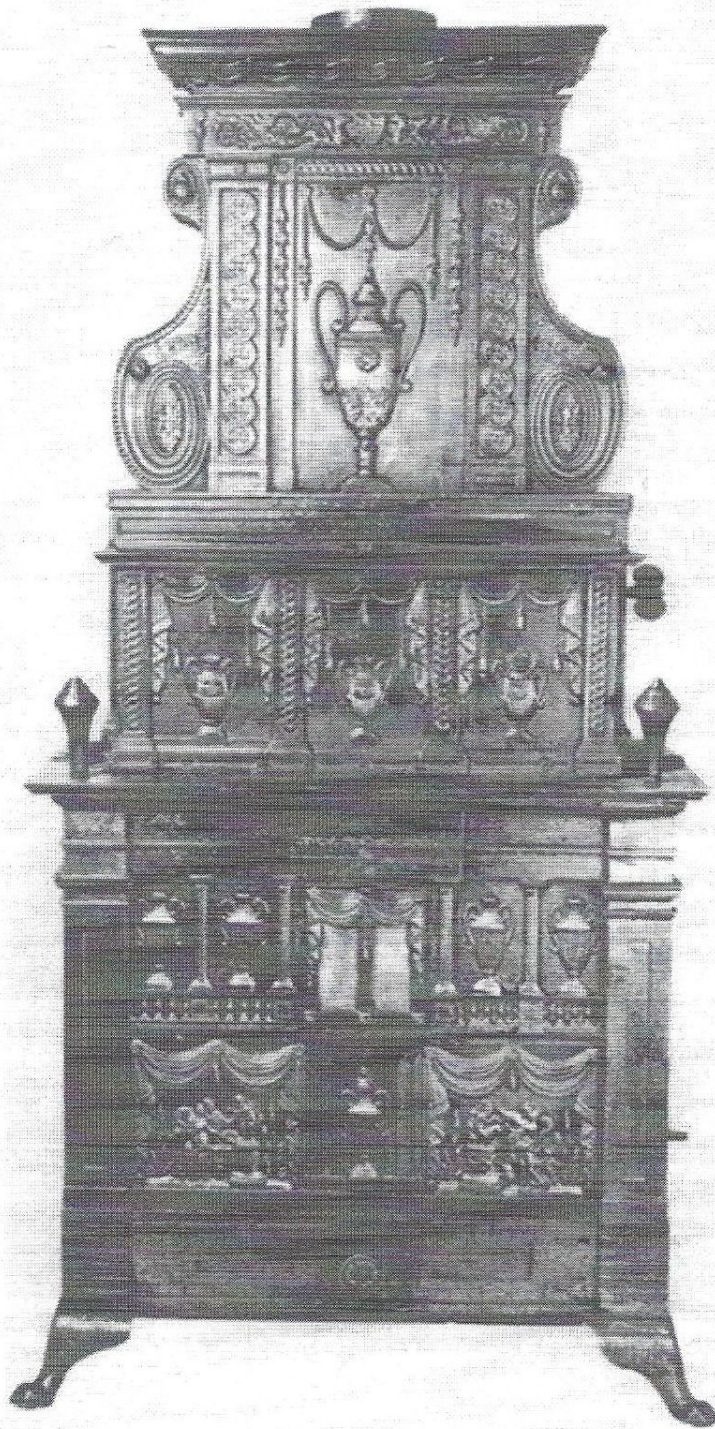
PENDING

41" x 23" x 28"

Collection of C. L. Mendenhall

The Stove Museum, Hoosick, N. Y.

This wood-burning parlor stove was one of the "Art Stoves" made by Ransom Stove Works. It is almost identical to the stove advertised in Fig. 113.



130. **Base-burning Stove**

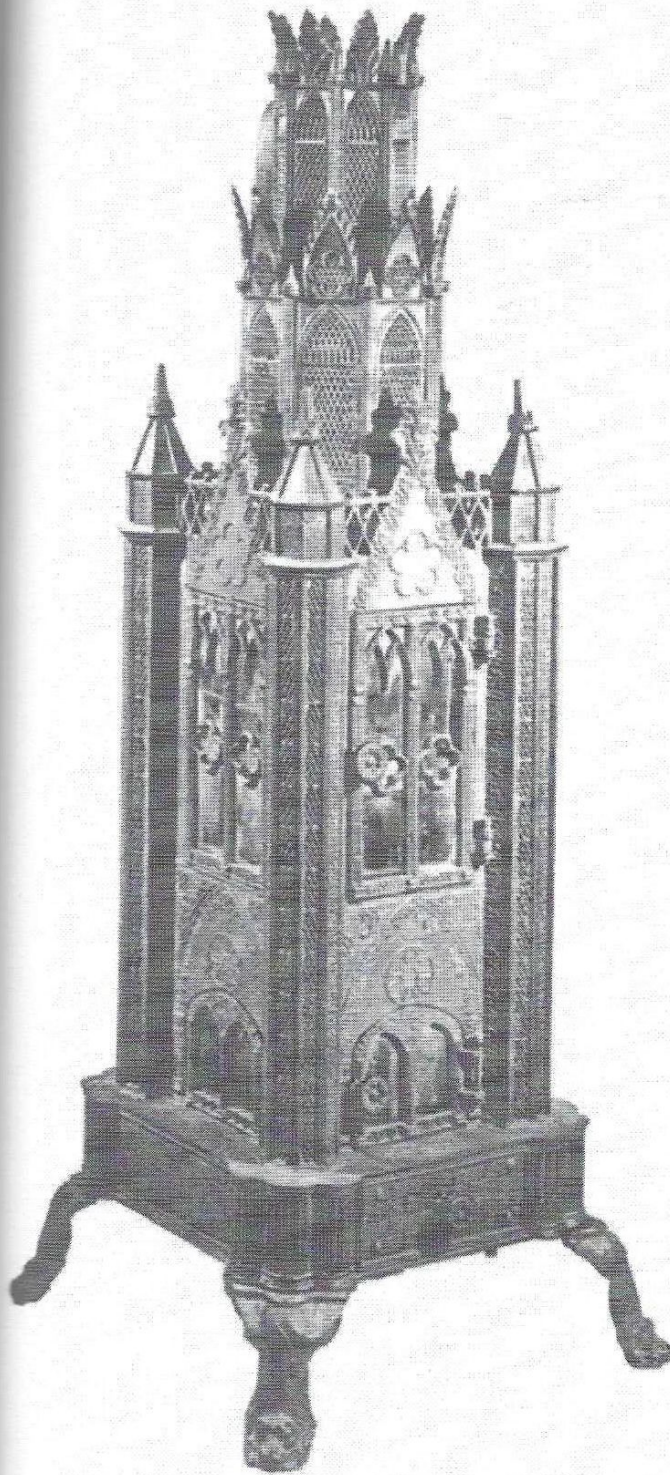
NOTIS PATENT

c. 1832

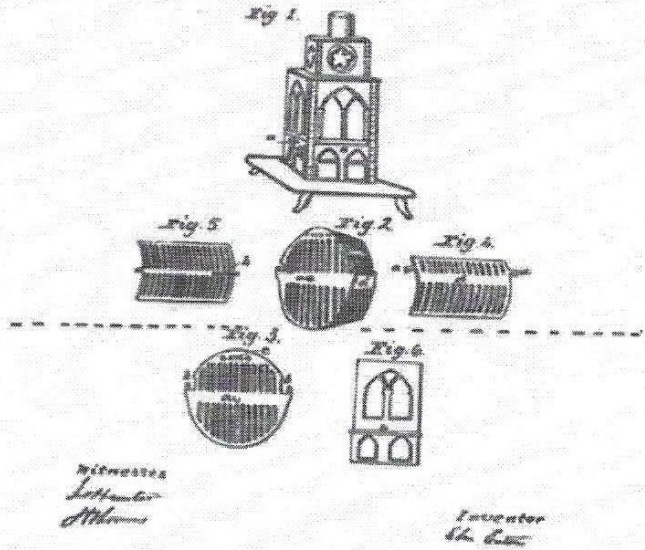
59" x 29" x 19"

Collection of the New York State Museum, Albany,
N.Y.

Classical forms and architectural elements distinguish this stove from its impressive Gothic counterparts. Note the two scenes near the base of the stove, the isinglass windows for viewing the fire, and the similarity of the molded, hairy paw feet on all three stoves.



137. **Pyramid Stove**
HALSTED'S & BARTON, TROY, N. Y.
EATON'S PATENT
 c. 1840
 57" x 21" x 21"
 Collection of Mr. and Mrs. Graham Gund
 Photograph courtesy of Richard McGeehan, Bedford Hills, N. Y.



138. **Furnace of Stoves for Burning Anthracite.** Patented by Eben Eaton of Troy on January 20, 1838. Invention Pat. No. 570. Courtesy of the New York State Library in Albany.

Eben Eaton of Troy invented this "new and useful Improvement in Furnaces of Stoves for Burning Anthracite and other Coals." It appears that Eaton also designed the stunning overall architectural motifs as well.